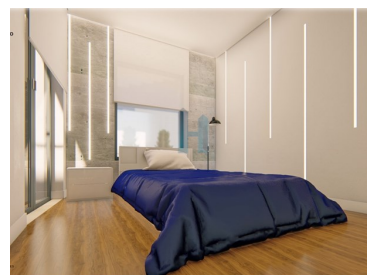




## Portimão - Villa



 **2** Bedrooms  
 **2** Bathrooms  
 **282** Area (m<sup>2</sup>)  
 **141** Land Area (m<sup>2</sup>)  
 Swimming Pool

**350 000 €**  
(EUR €)

## House T2 under construction - Portimão

Are you looking for a new build villa with river views in Portimão?  
I have the solution you are looking for!

This magnificent villa consists of:

- Two Bedrooms
- Two toilets
- A walk-in closet
- Open space kitchen
- Swimming pool
- Double glazing
- Solar panels
- Pre-installation of air conditioning
- Security door



**Ana Duarte**

934085275 <sup>2</sup>

anaduarte@thepenthouse.pt

**T +351 282 431 253 <sup>1</sup> · E info@thepenthouse.pt**  
**Rua do Sol, Ed. Elite Residence, Loja A, 8500-411 Portimão**  
**AMI 20698**

<sup>1</sup> (Call to national fixed network) | <sup>2</sup> (Call to national mobile network)



-Garden

- Class A energy certificate

Located in a quiet area, but close to the city, this house is ideal for those looking for peace and a magnificent view of the river and mountains.

Don't miss the opportunity to acquire this wonderful villa that will be completed in 2025.

Schedule your visit now!!

## Property Features

- Equipped kitchen
- Pool
- Built year: 2024
- Views: River view
- Double glazing
- Balcony
- Energetic certification: A
- Fitted wardrobes
- Proximity: City, Hospital, Public Transport, Playground
- Kitchenette
- Video entry system
- Quiet Location
- Security door



**Ana Duarte**

934085275 <sup>2</sup>

anaduarte@thepenthouse.pt

**T +351 282 431 253 <sup>1</sup> · E info@thepenthouse.pt**  
**Rua do Sol, Ed. Elite Residence, Loja A, 8500-411 Portimão**  
**AMI 20698**

<sup>1</sup> (Call to national fixed network) | <sup>2</sup> (Call to national mobile network)